

Flush Drywall Receptacle Mount [Lite]

- Designed for light switches, outlets, ethernet and phone receptacles.

*Instructions below illustrate the install of an outlet, install method is the same for all receptacle types.

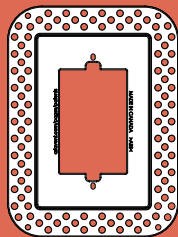
- Compatible with any screwless wall plate.

*Purchase wall plate separately. Recommended Brands: Leviton, Lutron, Eaton.

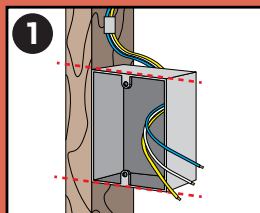
- Some preparation to receptacle box is required (see step 1).

- Best done prior to drywall installation.

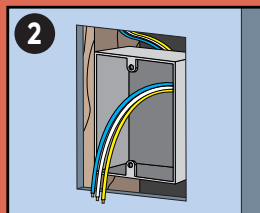
*Requires professional drywall taping install.



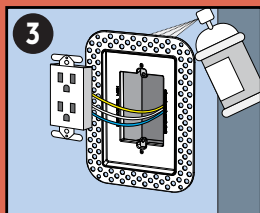
Install Guide



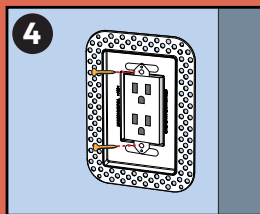
Ensure the receptacle box is installed flush to the studs.



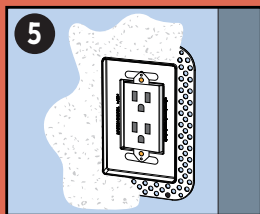
Cut opening in drywall to fit **Flush Drywall Receptacle Mount**.



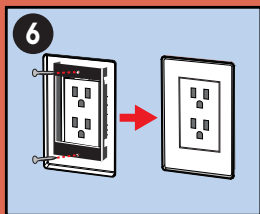
Ensure flange is flat to the wall. Use spray adhesive to fasten as needed.



Fasten the outlet to the receptacle box through the "T" shaped holes in the **Flush Drywall Receptacle Mount**.



Tape, mud to cover flange. Once dry, sand. Repeat as needed then paint to match wall colour.



Fasten the screwless wall plate frame and snap on wall plate.

*Wall plate and wall plate frame not included.



Visit www.ariavent.com for more information