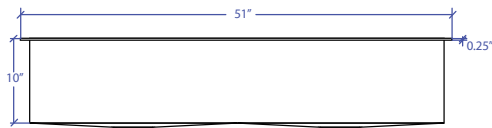
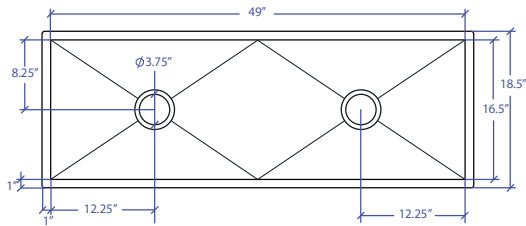


WORKSTATION MFWS-649GPSB



INDUSTRY'S ONLY STAINLESS STEEL SINK DESIGNED SPECIFICALLY TO BE FLUSH-MOUNTED



• FEATURES

- 16-gauge type 304 stainless steel
- 5-gauge 304 stainless steel rim

• TECHNICAL INFORMATION

- External dimension: 51"Lx18.5"Wx10"D
- Basin dimensions: 49"Lx16.5"Wx10"D
- Rim width: 1"
- Rim thickness: 1/4"
- Rim corner: 1/4" round

• FINISHES

- Graphite PVD Satin Brushed stainless steel

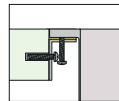
• INSTALLATION OPTIONS

- Flush-mount

• MINIMUM CABINET SIZE (I.D.)

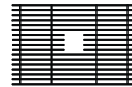
- Flush-mount 53"

• INSTALLATION TYPE



Flush-mount

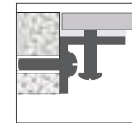
• INCLUDED ACCESSORIES



MBG-6520GPSB
Basin Grid



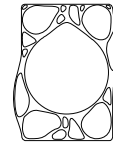
MBG-6520GPSB
Basin Grid



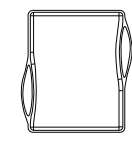
Flush Mount Kit
(Included)
MTK-621AL



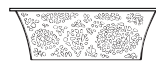
MWBM-651GPSB
Bain Marie



MWSM-651GPSB
Salad Mixer



MWCB-651GPBB
Cutting Board



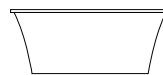
MWC-651GPSB
Colander

US Patent No. 9,988,799 CA Patent No. 2579506
International Patent Pending

PROJECT INFORMATION

Project			
Date	/ /	QTY	
Specifier			
Contact			
Note			

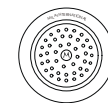
• OPTIONAL ACCESSORIES



MWSS-651GPSB
Side Sink



MDC-101GPSB
Disposal Collar



MKD-101GPSB
Strainer