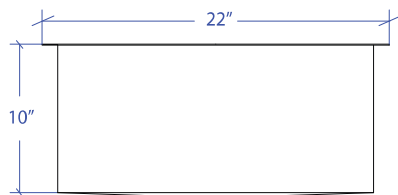
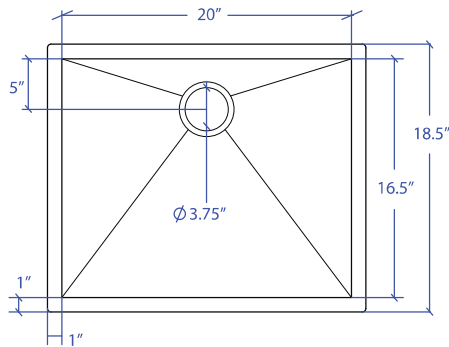


FLATIRON MUS-652GPSB



*Custom ADA compliant versions are available



• FEATURES

16-gauge type 304 stainless steel
90° zero radius design

• TECHNICAL INFORMATION

External dimension: 22"Lx18.5"Wx10"D
Basin dimensions: 20"Lx16.5"Wx10"D

• FINISHES

Graphite PVD Satin Brushed stainless steel

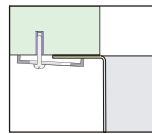
• INSTALLATION OPTIONS

Top-mount
Under-mount

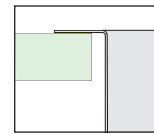
• MINIMUM CABINET SIZE (I.D.)

Top-mount 23"
Under-mount 25"

• DUAL-MOUNT INSTALLATION

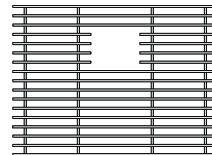


Under-mount



Top-mount

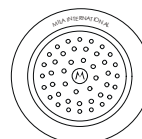
• ACCESSORY OPTIONS



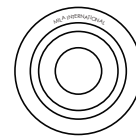
MBG-6507GPSB
Basin Grid



MCB-651BB
Cutting Board



MKD-101GPSB
Strainer



MDC-101GPSB
Disposal Collar

PROJECT INFORMATION

Project			
Date	/	/	QTY
Specifier			
Contact			
Note			