

# FLATIRON MUS-804SB



\*Custom ADA compliant versions are available

## • FEATURES

16-gauge type 304 stainless steel  
90° zero radius design

## • TECHNICAL INFORMATION

External dimension: 23"Lx20"Wx9"D  
Basin dimensions: 21"Lx18"Wx9"D

## • FINISHES

Satin Brushed stainless steel

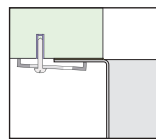
## • INSTALLATION OPTIONS

Top-mount  
Under-mount

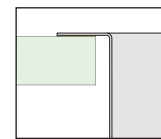
## • MINIMUM CABINET SIZE (I.D.)

Top-mount 24"  
Under-mount 26"

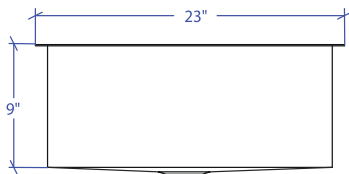
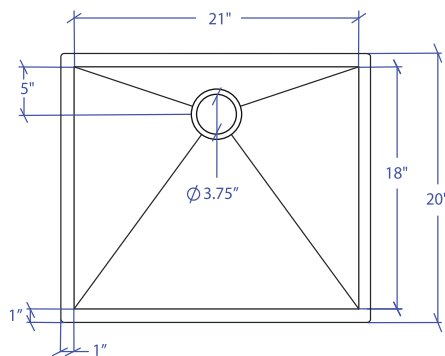
## • DUAL-MOUNT INSTALLATION



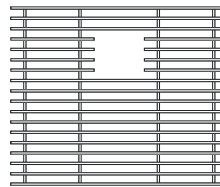
Under-mount



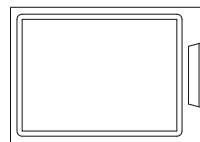
Top-mount



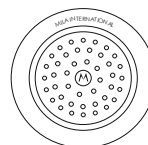
## • ACCESSORY OPTIONS



MBG-084SB  
Basin Grid



MCB-801BB  
Cutting Board



MKD-101SB  
Strainer

PROJECT INFORMATION			
Project			
Date	/ /	QTY	
Specifier			
Contact			
Note			